

For Sale

2

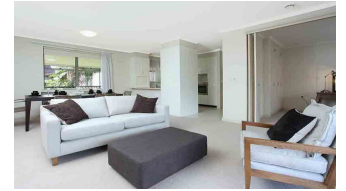
2

1

Constitution Hill

M20/1 Centenary Ave, NORTHMEAD NSW 2152
1300 160 170

\$650,000*



DEPOSIT TAKEN

Located in the popular Constitution Hill village, this first floor unit has two spacious bedrooms and a generous combined lounge and dining area. The main bedroom features access to the ensuite, and the second bedroom is perfect for those overnight guests or as a home office or hobby room. The large living area opens out onto a spacious balcony from where you can enjoy the garden views while you relax with a cup of tea and the paper. You will be comfortable year-round with ducted air conditioning. This unit has been freshly painted and carpeted, and offers the convenience of your very own security parking. Located near the main entry to the village, this unit is within easy level walking distance of the village community centre which is a hub of activity. Catch up with friends in the café, join in the regular exercise classes or play a game of bowls on the onsite bowling green. Constitution Hill is in a great location in Northmead, with many buses departing from outside the entrance to the village.

*Price is correct at time of publication and is subject to change.

© Australian Unity Retirement Living Services Ltd. ACN 085 317 595 Level 14, 114 Albert Road, South Melbourne, Victoria 3205.